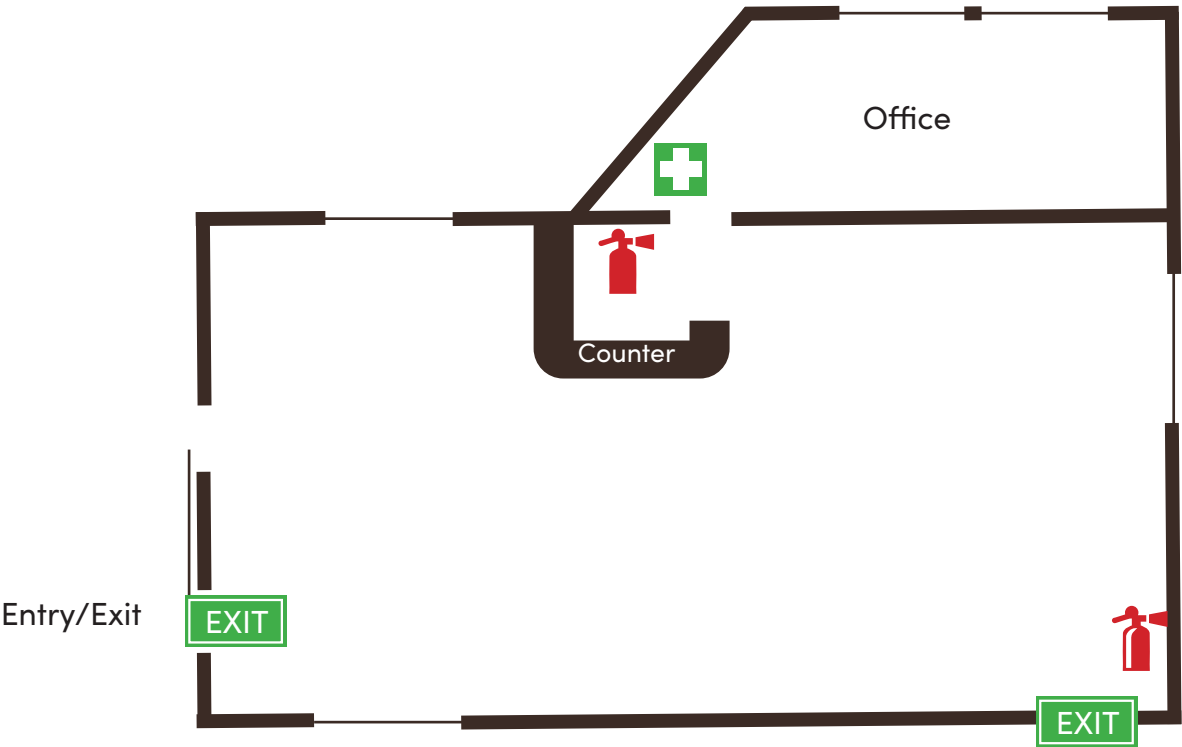
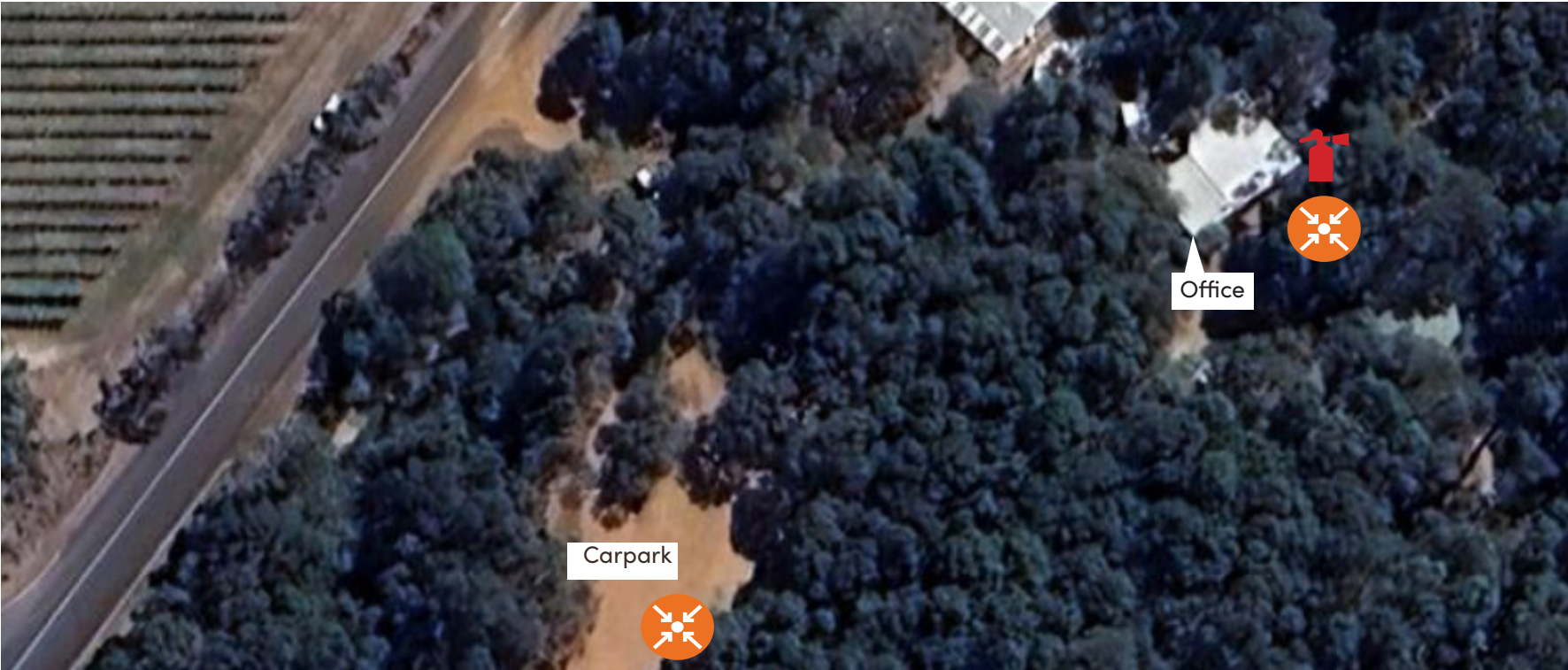


Capes Raptor Centre



EMERGENCY SITE MAP



Grounds Overview









Key

- | | | | | | |
|---|-----------------------------|---|------------|---|---------------|
|  | Dry Powder Extinguisher |  | Fire Hose |  | Muster Point |
|  | Carbon Dioxide Extinguisher |  | Exit |  | First Aid |
|  | Fire Blanket |  | Exit Paths |  | Defibrillator |

Emergency Contact Numbers

In case of emergency please call 000. Please stay calm, speak clearly and remember to give your exact location and state.

- | | |
|---|--|
|  | 000 (112 from mobiles)
Fire/Police/Ambulance |
|  | 131 444
Police Assistance (non-urgent) |
|  | 132 500
State Emergency Service |
|  | 131 351
Western Power |
|  | 138 138
Main Roads |
|  | 131 375
Water Corporation Emergencies |

Staff Contacts

- | | |
|---|--------------|
| Site Manager
Tara Finch | 9780 5934 |
| Business Operations Manager
Matt Norton | 0488 164 034 |
| Assets Manager
Sal Sgroi | 0418 881 100 |
| Resource Development Manager
Steve Harrison | 9780 5920 |
| CEO
Sharna Kearney | 9780 5923 |

Upon receiving advice of a fire or emergency follow instructions from site senior, make your way to the exits, meet at the muster point. Remember that only trained personnel should use an extinguisher to fight a fire, and only then, if it is safe to do so.