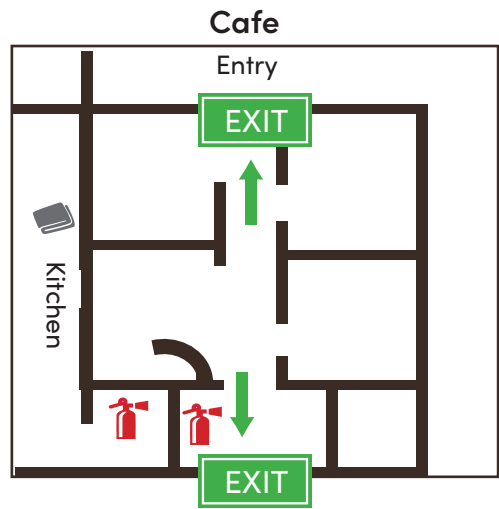
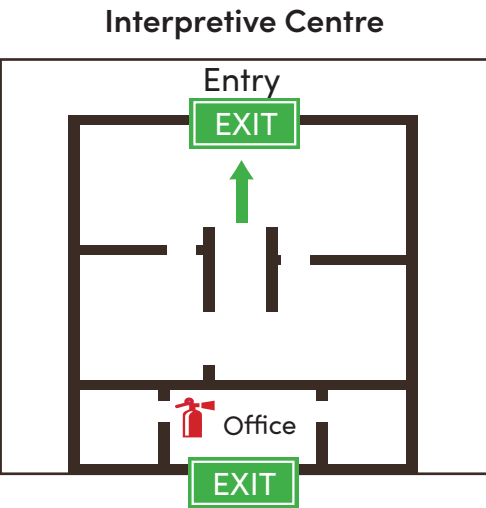
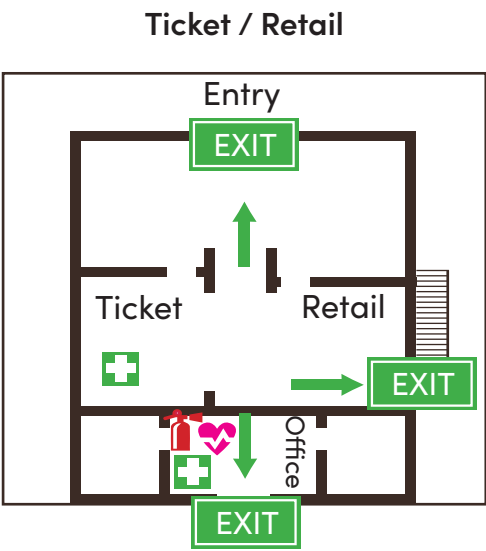
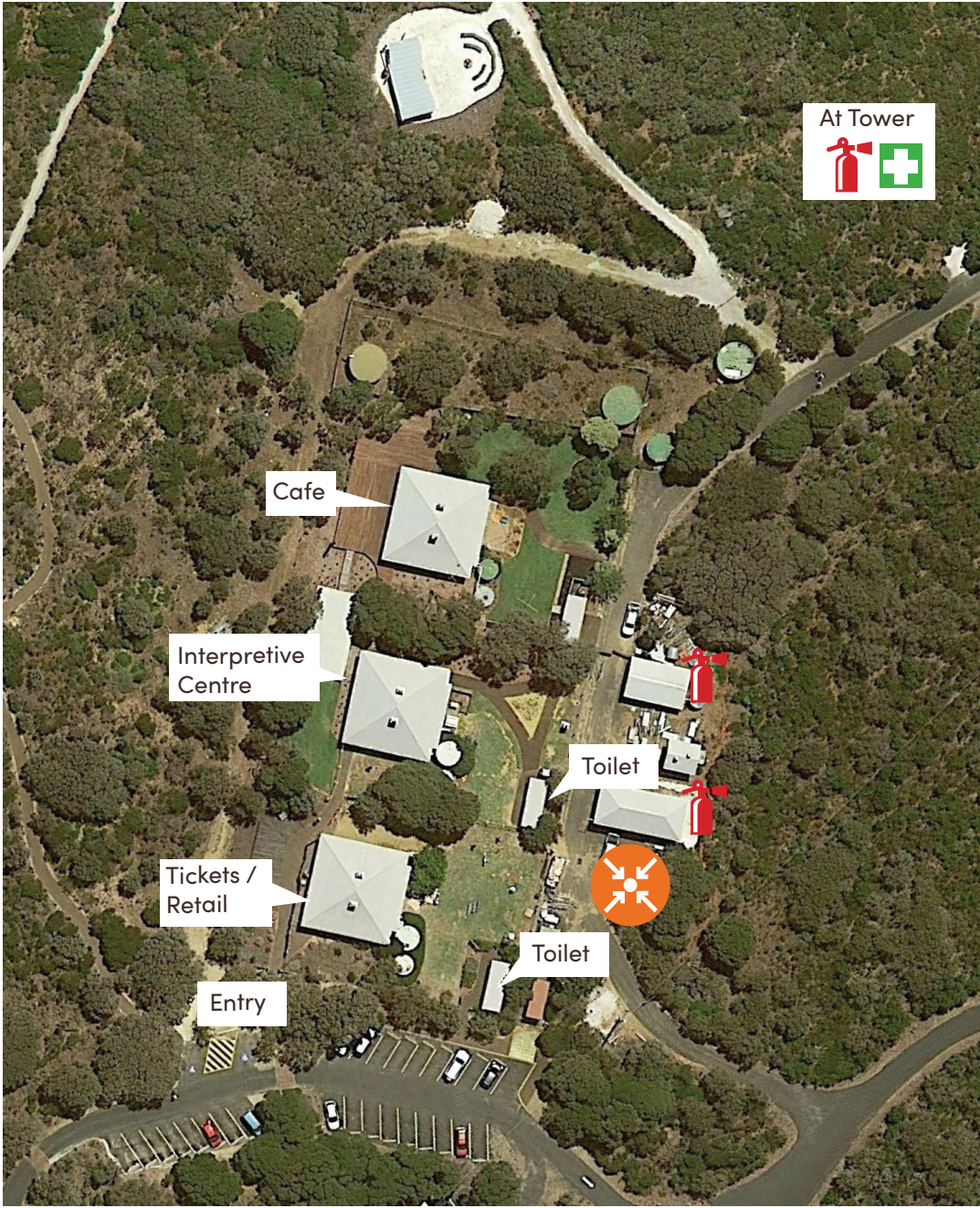


Cape Naturaliste Lighthouse

EMERGENCY SITE MAP

Grounds Overview



Key



Dry Powder Extinguisher



Carbon Dioxide Extinguisher



Fire Blanket



Fire Hose



Exit



Exit Paths



Muster Point



First Aid



Defibrillator

Emergency Contact Numbers

In case of emergency please call 000. Please stay calm, speak clearly and remember to give your exact location and state.



000 (112 from mobiles)
Fire/Police/Ambulance



131 444
Police Assistance (non-urgent)



132 500
State Emergency Service



131 351
Western Power



138 138
Main Roads



131 375
Water Corporation Emergencies

Staff Contacts

Site Manager Tod Kearns	9780 5962
Assistant Site Manager Chelsea Bell	0403 138 470
Business Operations Manager Matt Norton	0488 164 034
Assets Manager Sal Sgroi	0418 881 100
Resource Development Manager Steve Harrison	9780 5920
CEO Sharna Kearney	9780 5923

Upon receiving advice of a fire or emergency follow instructions from site senior, make your way to the exits, meet at the muster point. Remember that only trained personnel should use an extinguisher to fight a fire, and only then, if it is safe to do so.