

Margaret River Region

# Caves & Lighthouses Forest Adventures Eagles Heritage



# Capes Foundation

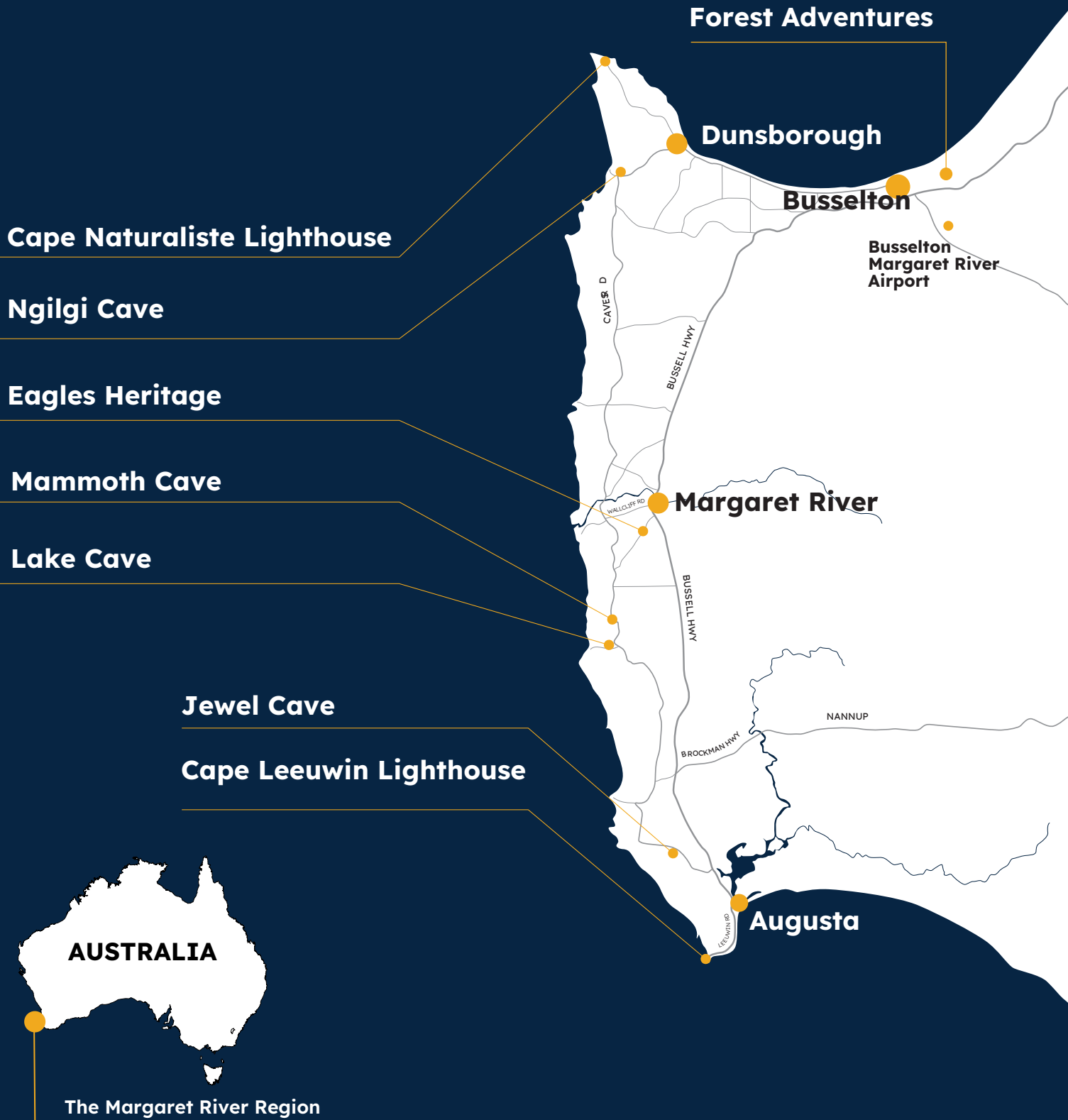
is a not-for-profit organisation that manages and conserves eight of the region's cornerstone nature-based tourism experiences that connect visitors with the incredible natural abundance, historical richness, and cultural vibrancy of the Margaret River Region.

Immerse in the tranquil native forest and encounter marvellous birds of prey during awe-inspiring flight displays at Eagles Heritage Wildlife Centre. Spread your own wings and soar through the canopies of the Ludlow Tuart forest with 77 exciting high rope activities spread over six courses at Forest Adventures South West.

Discover a rich history and be rewarded with panoramic ocean views during fully guided tours of two magnificent working lighthouses that guard the coast. Cape Naturaliste Lighthouse in the north is an easy climb and Cape Leeuwin Lighthouse in the south, Australia's tallest mainland lighthouse.

Delve deeper into the region's ancient underground with four exquisitely decorated limestone caves that lie beneath the surface of the Leeuwin-Naturaliste Ridge. Visitors can explore the stunning crystal caves, 364 days a year, via guided or self-guided tours. Whichever you choose, you will be rewarded with a truly unique and unforgettable experience.

# Capes Foundation Experiences





# Forest Adventures

Adrenaline, fun-filled courses, and flying foxes among the majestic trees of the legendary Tuart Forest in the beautiful South West, Western Australia. Spanning 8 acres of unspoilt natural bushland, Forest Adventures offers 77 activities on six huge courses, combining rope and wire challenges set high among the trees catering for all skills, fitness and daring levels.



Having combined world class European standards for safety and design with the South West's supreme environment, and many unique activities, we are proud to present Forest Adventures as one of the best of its kind in Australia.

The course has been designed, engineered and built by a world-leading team of experts from France using state-of-the-art safety systems from Germany. Professional staff will fit the safety equipment and provide on-course training to ensure you can access the activities in full safety.







## High Ropes Session (2.5 hours)

Starting off at just 3 meters and working right up to 19 metres above the forest floor, the activities increase in difficulty; getting wobblier, longer and more challenging as you progress. Each course has a series of fun and challenging activities that wind their way through the treetop.



## Team Challenge Course (1 hour)

*\*Only available as an add-on to the high ropes course for groups of more than 30 pax.*

A series of physical and mental challenges designed to put your team to the test. With a variety of challenges to choose from the session can be designed to suit your specific goals. Tyres crossing, Rope Maze, Spider Web, Low Wall and the Tyre Stack are all designed with communication, teamwork and lateral thinking in mind.



## Archery (1 hour)

*\*Only available as an add-on to the high ropes course for groups of more than 30 pax.*

The 15-lane archery range is designed to develop concentration, patience and perseverance. Participants challenge themselves individually, contributing results to a team contest. The instructors teach techniques to improve accuracy and distance with a recurve bow. As confidence and skills develop the shooting distances can be extended to a maximum of 15m.

# Cape Naturaliste Lighthouse

Cape Naturaliste Lighthouse has an easy climb of 59 stairs, making this lighthouse one of the most popular attractions in the Margaret River Region – and accessible even for small children.



The Cape Naturaliste Lighthouse precinct reveals the fascinating maritime history of the Cape region. Half-hour guided tours provide a captivating insight into the functions of the working lighthouse, as well as stories of tragic shipwrecks and the challenging lives of the lighthouse keepers.

From the top balcony of the lighthouse, visitors are rewarded with breathtaking panoramic views of the Indian Ocean, Leeuwin-Naturaliste National Park and the beautiful Geographe Bay coastline. The observation platform at the base of the lighthouse tower also allows for incredible coastal views and photography.



# Ngilgi Cave

## Ancient Lands Experience

Ngilgi Cave and the Ancient Lands Experience offers a captivating and immersive adventure both above and below the ground.



### Ancient Lands Experience

Above ground, the Ancient Lands Experience takes visitors on a journey of discovery along a universally accessible boardwalk, bringing to life the creation of the land, cave formations, cultural connection and native flora and fauna through a series of experiential nodes.



### Ngilgi Cave

Below ground, visitors will uncover the exquisitely decorated Ngilgi Cave. Descending a staircase in time, visitors to its depths will marvel at the caves' stunning stalactites, stalagmites, helictites and beautifully coloured shawls.

This is a self-paced experience, with guides stationed above and below ground to answer questions and provide further information.



# Eagles Heritage

Eagles Heritage is a bird of prey sanctuary dedicated to the care of injured, orphaned, or displaced birds of prey. Experience the thrill of getting up close and personal with some of Australia's most magnificent birds of prey.



Twice daily, visitors can witness awe-inspiring Bird of Prey Encounters, where they can learn about the unique behaviours and adaptations of these majestic birds. These displays also feature the rare opportunity for visitors to have their photo taken with a resident barn owl.



A self-guided 1km walk takes visitors through the tranquil native forest, where they can meet an astounding array of powerful and elusive birds of prey.

Your visit and admission supports the ongoing protection and preservation of birds of prey through rehabilitation, conservation, and education. Eagles Heritage is located 5 kilometres south of the Margaret River Townsite.



# Mammoth Cave

Mammoth Cave is the most easily accessible of all the show caves in the region, with wheelchair access to the first chamber

Larger groups of 15 or more will receive a guided tour, while smaller groups of visitors will pick up an MP3 self-guided audio tour to get started; available in English, French, German, Malay and Mandarin.

Entering the cave through bushland via a gently sloping boardwalk, provides a seamless transition into the cave, creating a smooth and accessible pathway for all to enjoy.

Over 10,000 fossils had at one time accumulated inside the cave; upon excavating, many of these were found to be remains of Australian Megafauna (giant animals) that became extinct around 46,000 years ago. There is even a 50,000-year-old 'zygomaturus' jawbone embedded in the cave wall.

After exiting the cave, there is the option of a walk along the beautiful Marri Trail. Visitors during the winter and spring months will see a stream flowing through the cave, with the water stained red from natural tannins.





# Lake Cave

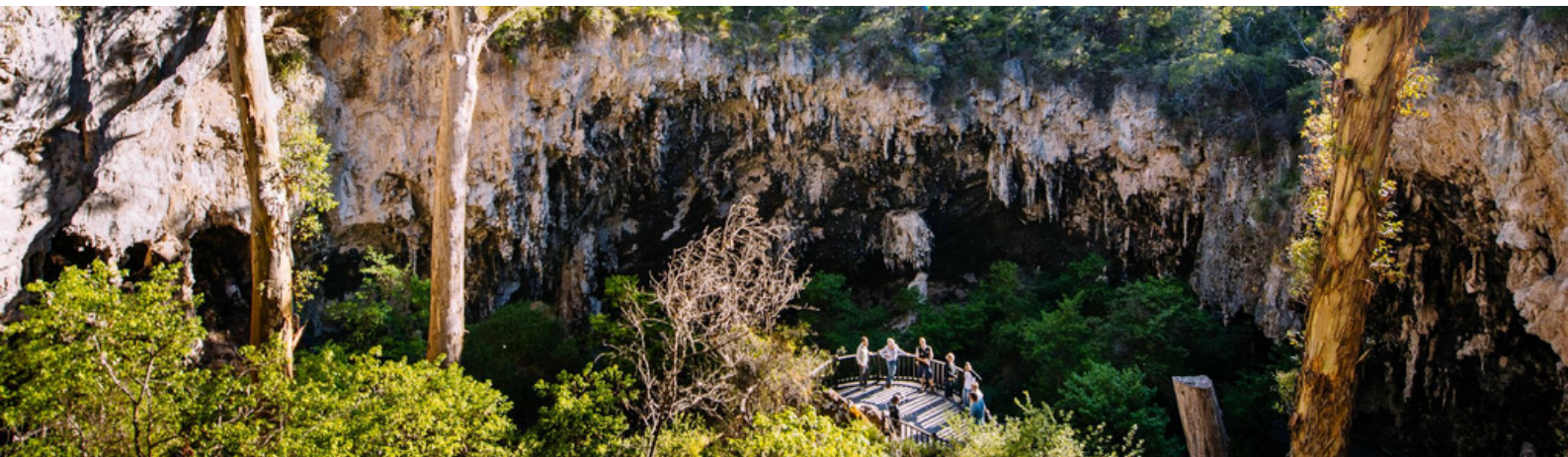
Lake Cave is a stunning pristine chamber deep beneath the earth. Inside the cave a tranquil lake mirrors the delicate crystal formations on the roof above, providing reflections that are simply breath-taking.



The only cave in the Leeuwin-Naturaliste Ridge that has a permanent lake; visitors to Lake Cave marvel at the unique 'Suspended Table' formation, which weighs several tonnes and seems to defy gravity as it hovers above the clear water.

Access to the cave is through a spectacular doline (sink hole). Visitors descend a 'staircase in time', to then gaze up at the towering karri trees from the floor of the sunken forest.

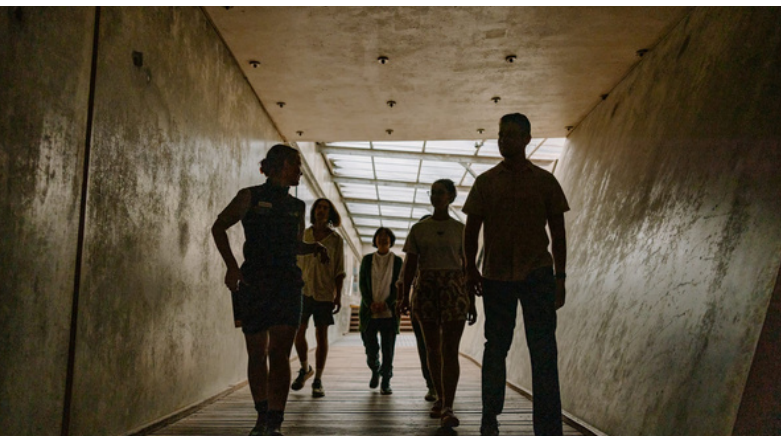
During a guided tour, the decorations seen range from massive calcite columns and flowstone to delicate shawls and crystal straws; many with droplets hanging from their tips - a sign that the formations are growing.





# Jewel Cave

Jewel Cave is the biggest show cave in Western Australia; comprising three massive chambers. It is also home to one of the longest straw stalactites found in any tourist cave in Australia.



Entering Jewel Cave is a magical experience, with a dazzling visual display of some of nature's finest and most meticulous work.

Fully guided one-hour tours showcase the breathtaking magnitude of Jewel Cave. Visitors will see towering crystal creations that have taken thousands of years to form, and intricate decorations stretching and suspended across the ceiling, like vines and dancing cobwebs. They'll also hear stories of the now-extinct Tasmanian Tigers that fell into the cave and perished.

The awe-inspiring crystal journey is perfectly complemented with the option of a self-guided Karri Walk through towering forest giants, at the end of the visit.



# Cape Leeuwin Lighthouse

Cape Leeuwin Lighthouse is situated at the tip of a spectacular peninsula where the Southern and Indian Oceans meet - the most south-westerly point of Australia.



As the tallest lighthouse on mainland Australia, Cape Leeuwin Lighthouse is a must-see attraction.

Visitors take a trip through maritime history and learn how this famous landmark was constructed from local limestone in 1895, and how it's still a vital working lighthouse for vessels navigating the treacherous cape. Guided half-hour tours go right to the top of the tower, where both the vast seascape of crashing waves and the beautiful wilderness of the cape are revealed.

An Interpretive Centre, housed in one of the original lighthouse keepers' cottages, celebrates the history and lives of the numerous lighthouse keepers who were custodians of this rugged coastline. Using artefacts and stories, interactive technology and a large-scale animated film, visitors can discover fascinating insights into the lives of the men, women and children who once lived at the tallest lighthouse in mainland Australia.





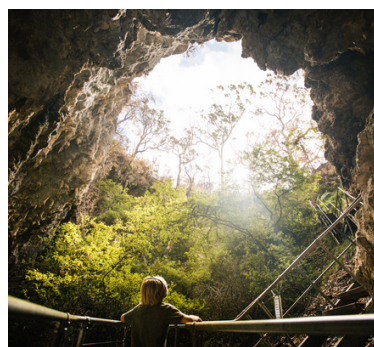
# Capes Foundation



**FOREST ADVENTURES**  
Busselton



**NGILGI CAVE**  
Yallingup



**MAMMOTH CAVE**  
Boranup Forest



**LAKE CAVE**  
Boranup Forest



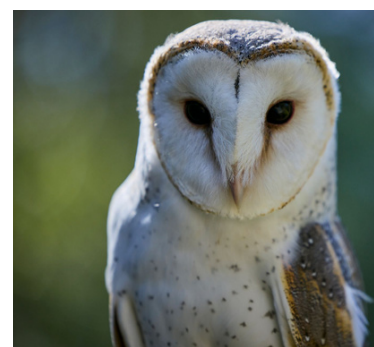
**JEWEL CAVE**  
Augusta



**CAPE NATURALISTE LIGHTHOUSE**  
Cape Naturaliste



**CAPE LEEUWIN LIGHTHOUSE**  
Cape Leeuwin



**EAGLES HERITAGE**  
Margaret River

For more information visit: [www.capesfoundation.org.au](http://www.capesfoundation.org.au)